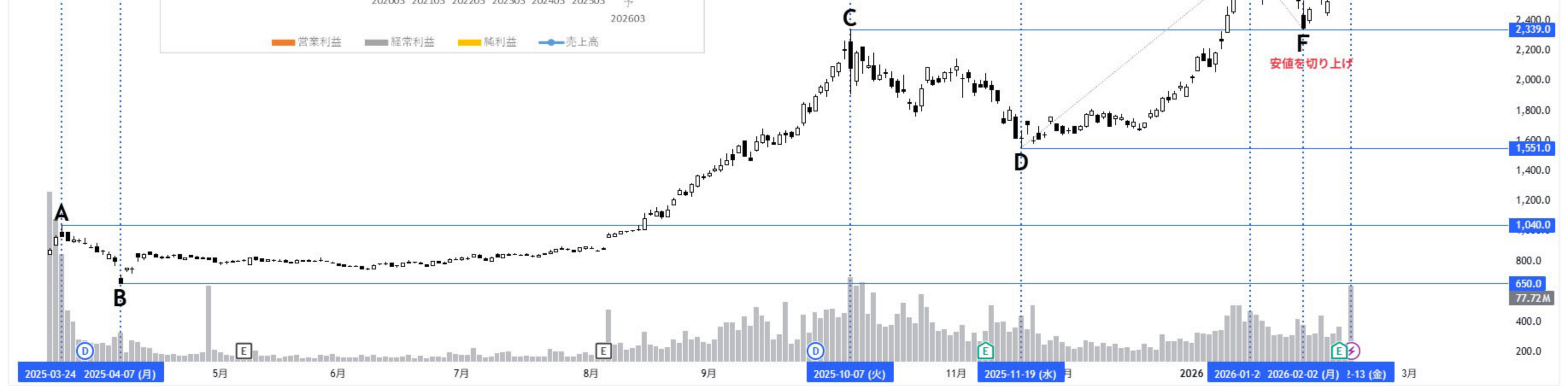
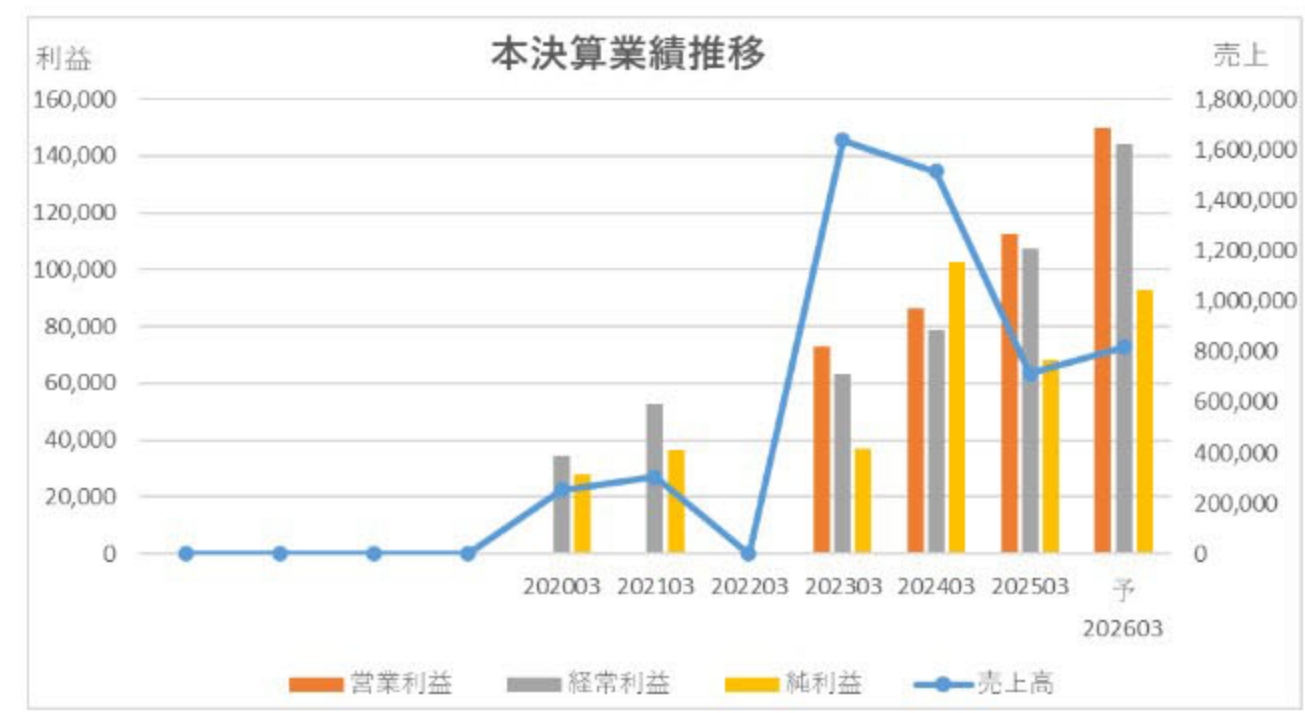


JX金属 1日・TSE 始値3,291.0 高値3,606.0 安値3,177.0 終値3,369.0 +89.0 (+2.71%)
77.72M

資料⑤



JPY

4,400.0

4,200.0

4,000.0

3,800.0

3,606.0

3,369.0

3,200.0

3,000.0

2,793.0

2,400.0

2,339.0

2,200.0

2,000.0

1,800.0

1,600.0

1,551.0

1,400.0

1,200.0

1,040.0

800.0

650.0

77.72M

400.0

200.0